

i29

Concentrate and play

Het Veer, Almere



**project**

Het Veer, Almere

design

i29 interior architects

client

Het Veer

category

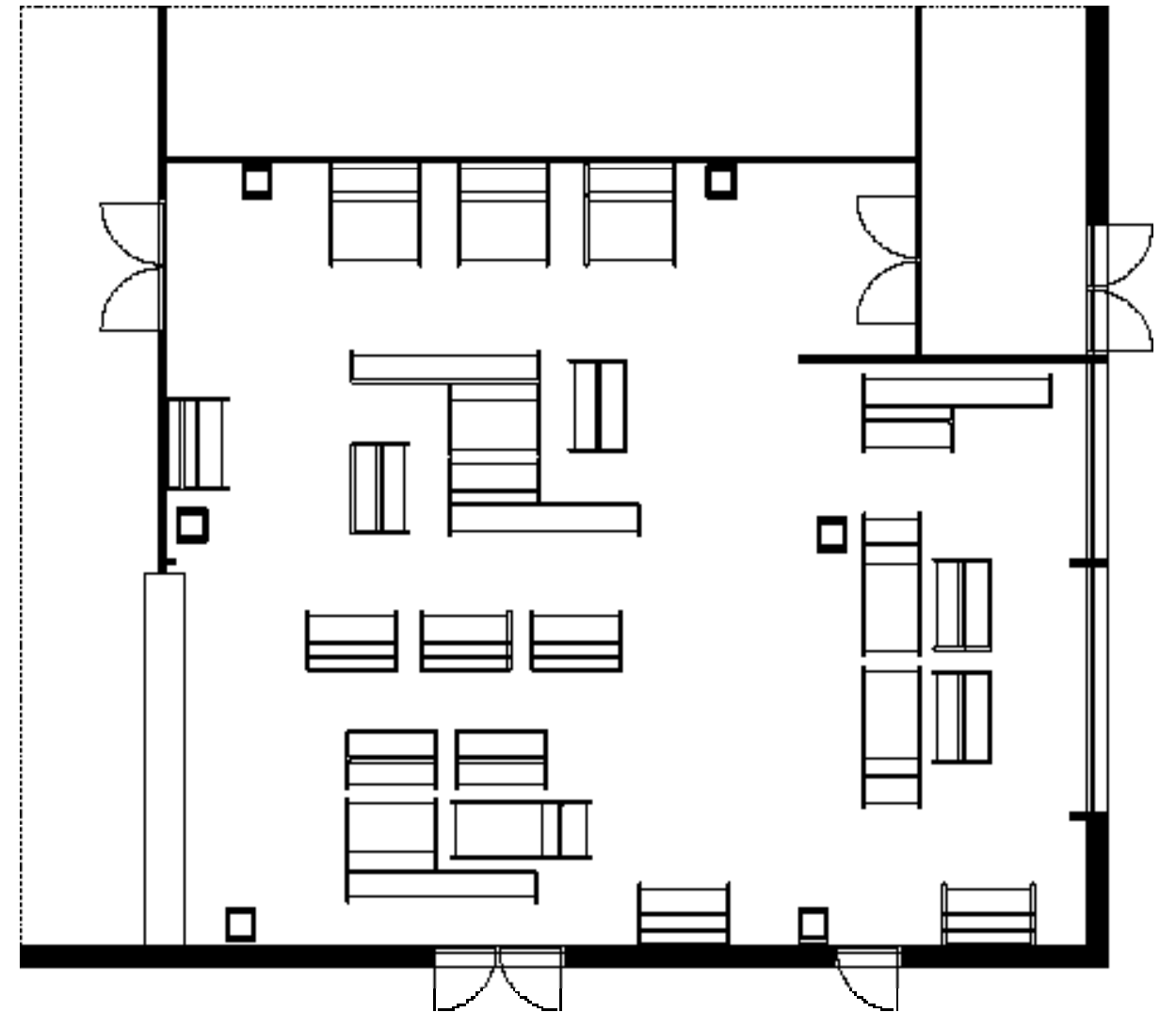
public

location

Almere, NL

floor area650 m²**completion year**

2009



'Het Veer' is a school for children with learning and concentration difficulties. A so-called ZMOK school. The education is very practical and specially intended for these children. This subject is used in the interior design for all public spaces. References in the design were 'concentration' 'playful' and 'movement'. This range of furniture expresses movement. Together they form a wire-frame that moves through space. The pieces of furniture bring to mind associations to the concentration-game Buzz Wire. These objects are playful, also in their functionality. Several types of furniture are combined into one program and it is not directly clear how they should be used. This makes the children concentrate on their environment and think how the furniture should be used.

project
Het Veer, Almere

design
i29 interior architects

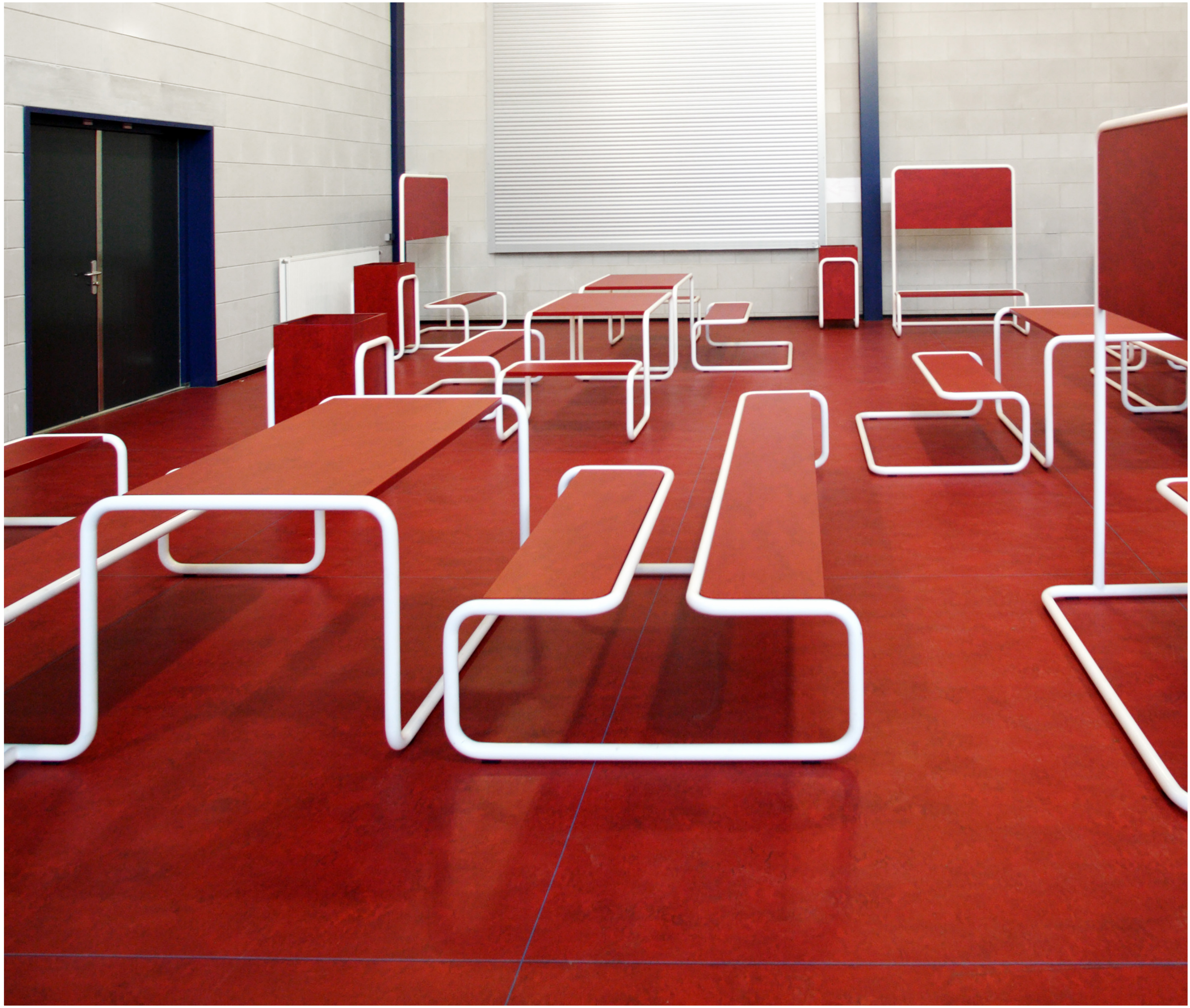
client
Het Veer

category
public

location
Almere, NL

floor area
650 m²

completion year
2009



project
Het Veer, Almere

design
i29 interior architects

client
Het Veer

category
public

location
Almere, NL

floor area
650 m²

completion year
2009

